

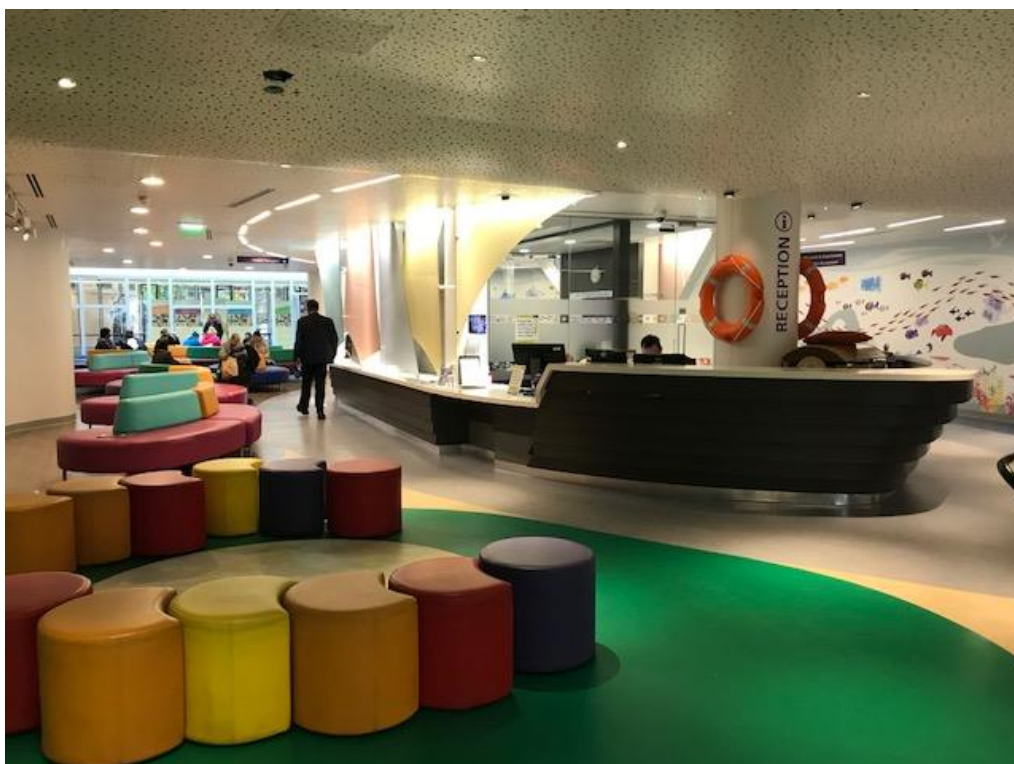
## Visual Storyboard for visiting Manta Ray outpatient department at Great Ormond Street Hospital (GOSH)

Some children find it helpful if they know a bit more about where they are going and who they will meet there. Talking through these pictures with your child may help them to feel more comfortable when you visit for your appointment.

This is the main entrance in to Great Ormond Street Hospital with sliding doors.



Just inside the sliding doors you will see the boat shaped reception desk



You will first enter Cheetah outpatient reception



Walk past the waiting area for Cheetah

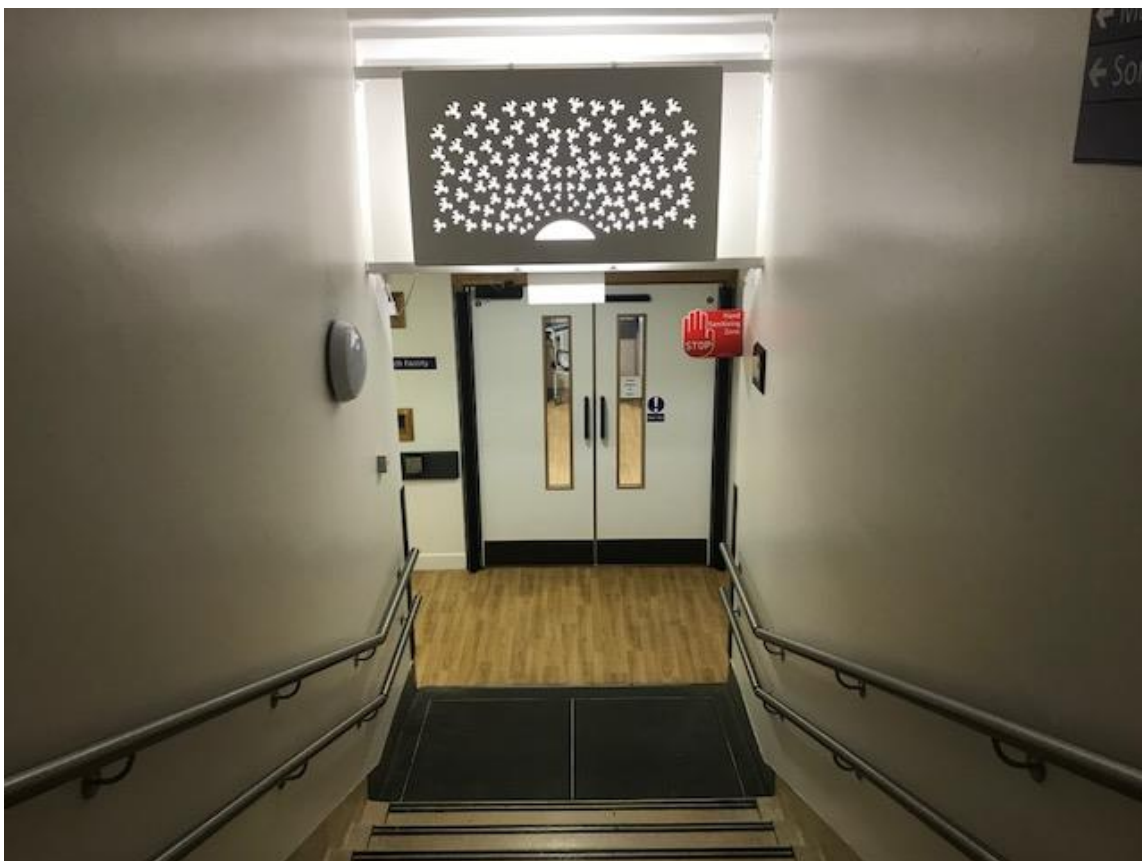


You will need to take the lift or stairs to get to Manta Ray outpatient department.

Going down the stairs you may see a colourful wall and the door to Manta Ray



At the bottom of the stairs is a picture of birds



Go through the doors in front of you – you are in Manta Ray outpatients

Look for the board with clinic names on it



If you look along the corridor you will see lots of doors to the clinic rooms, a waiting area and some toys



Round the corner is another waiting area with a television screen and some toys



Inside the clinic room are chairs and tables. You may get to sit at the table to do puzzles and games

