

# BRCA UNITE



Uniting researchers and BRCA mutation carriers to advance  
our understanding of hereditary cancer

**Information Event**

**Shaun Haran**

## Our supporters



Imperial College  
London



## Our message



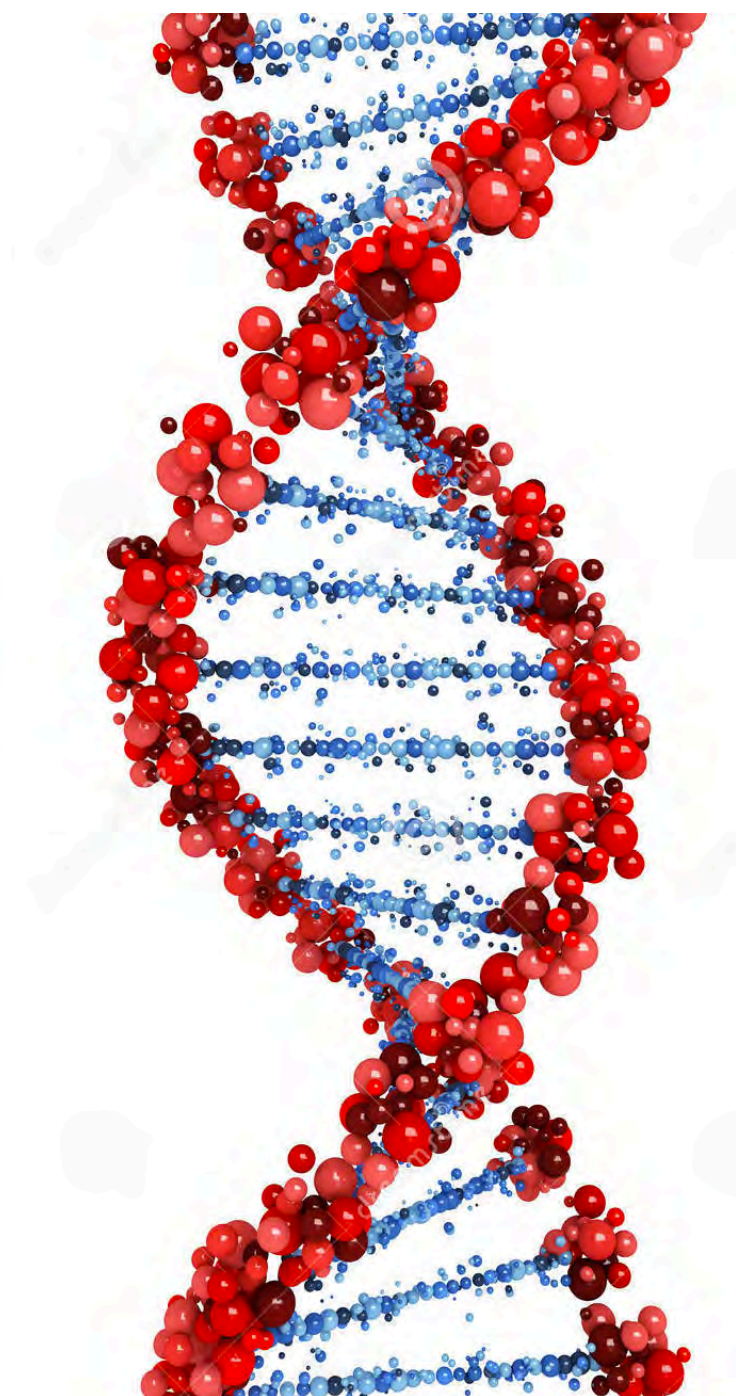
Understand



Predict



Prevent





“Do I need to consider risk reducing surgery?”

## BRCA1/2 Mutation

The New York Times

The Opinion Pages | OP-ED CONTRIBUTOR

### My Medical Choice

By ANGELINA JOLIE MAY 14, 2013

LOS ANGELES

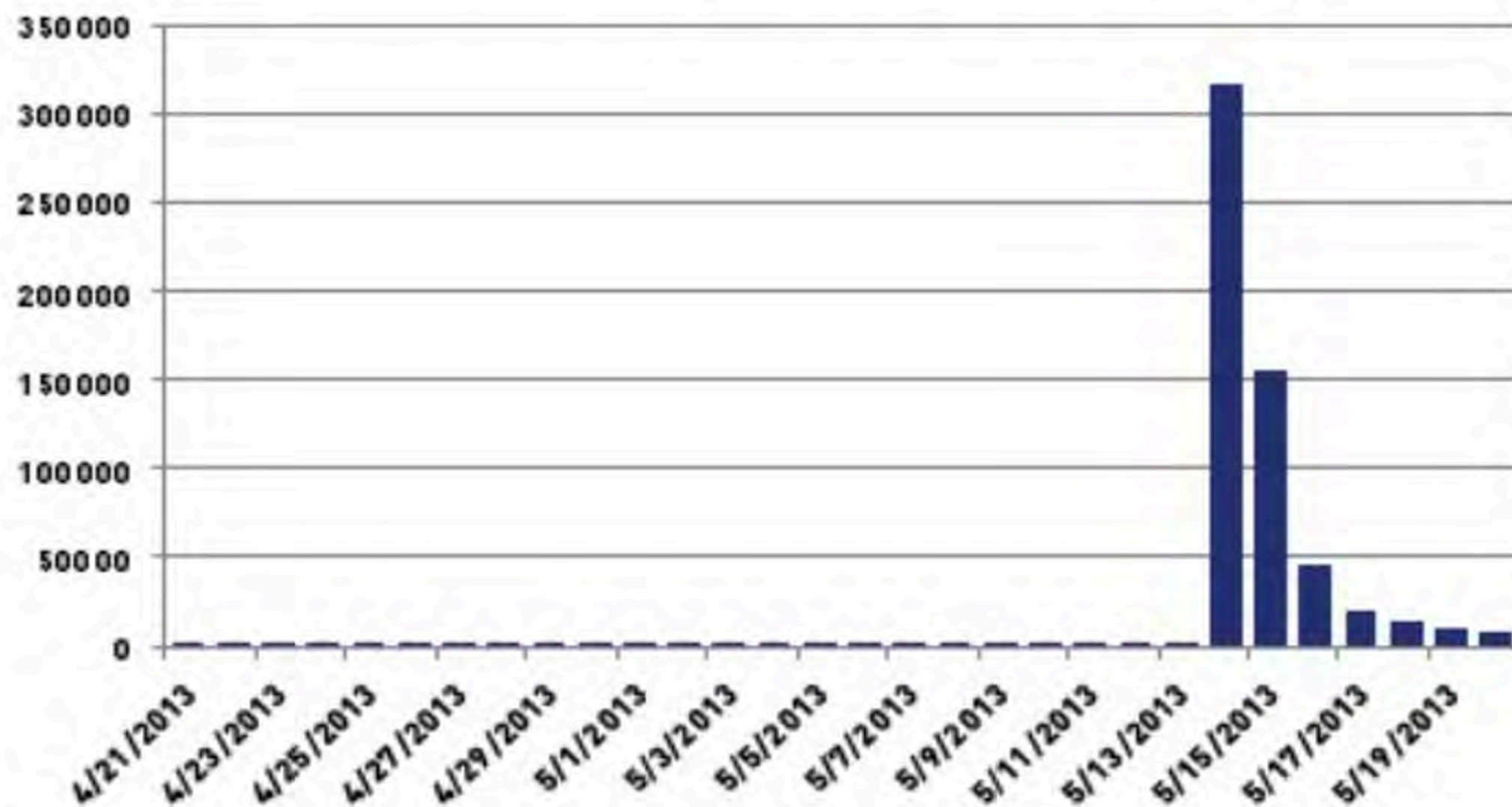
MY MOTHER fought cancer for almost a decade and died at 56. She held out long enough to meet the first of her grandchildren and to hold them in her arms. But my other children will never have the chance to know her and experience how loving and gracious she was.

We often speak of “Mommy’s mommy,” and I find myself trying to explain the illness that took her away from us. They have asked if the same could happen to me. I have always told them not to worry, but the truth is I carry a “faulty” gene, BRCA1, which sharply increases my risk of developing breast cancer and ovarian cancer.

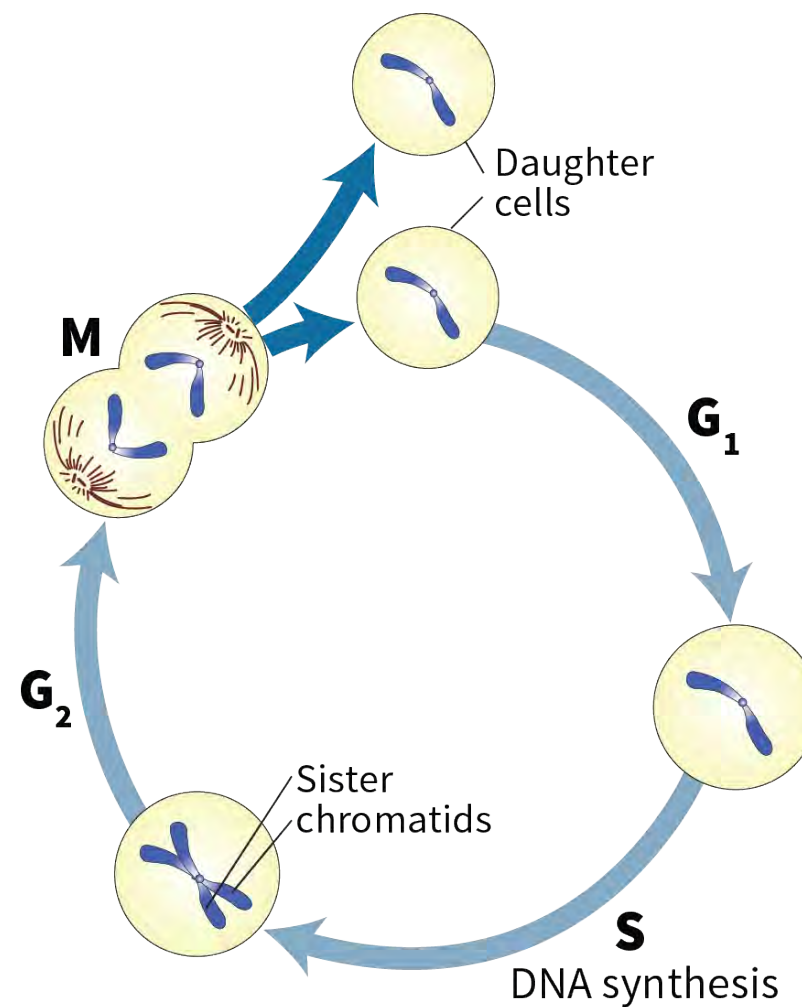


**Angelina Jolie**, *My Medical Choice* New York Times (14 May 2013)

## Wikipedia 'hits' of the words: Mastectomy



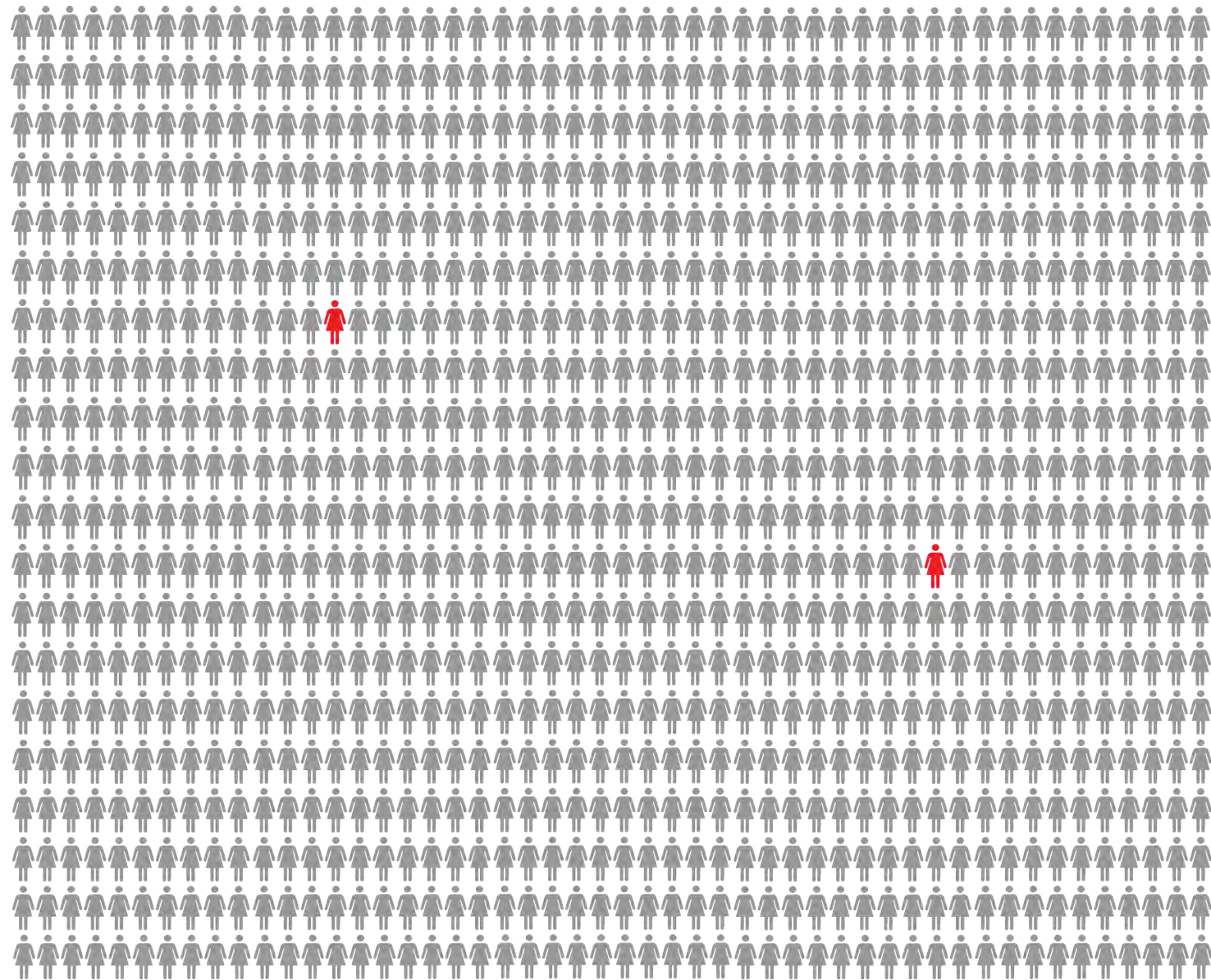
## BRCA1/2 function



**BRCA1/2**  
serve as  
**chromosome**  
**custodians.**

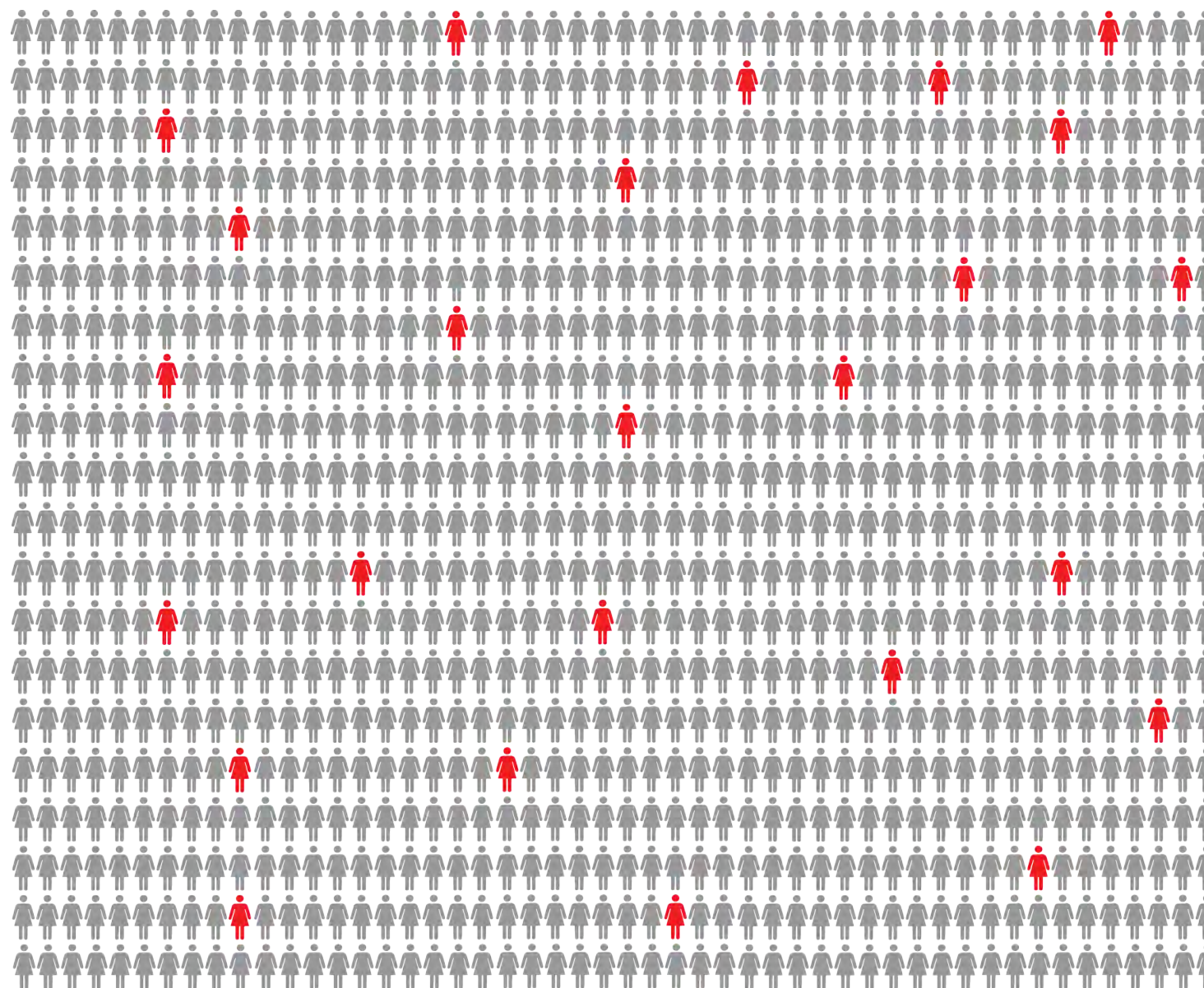


## BRCA1/2 Mutation – General population

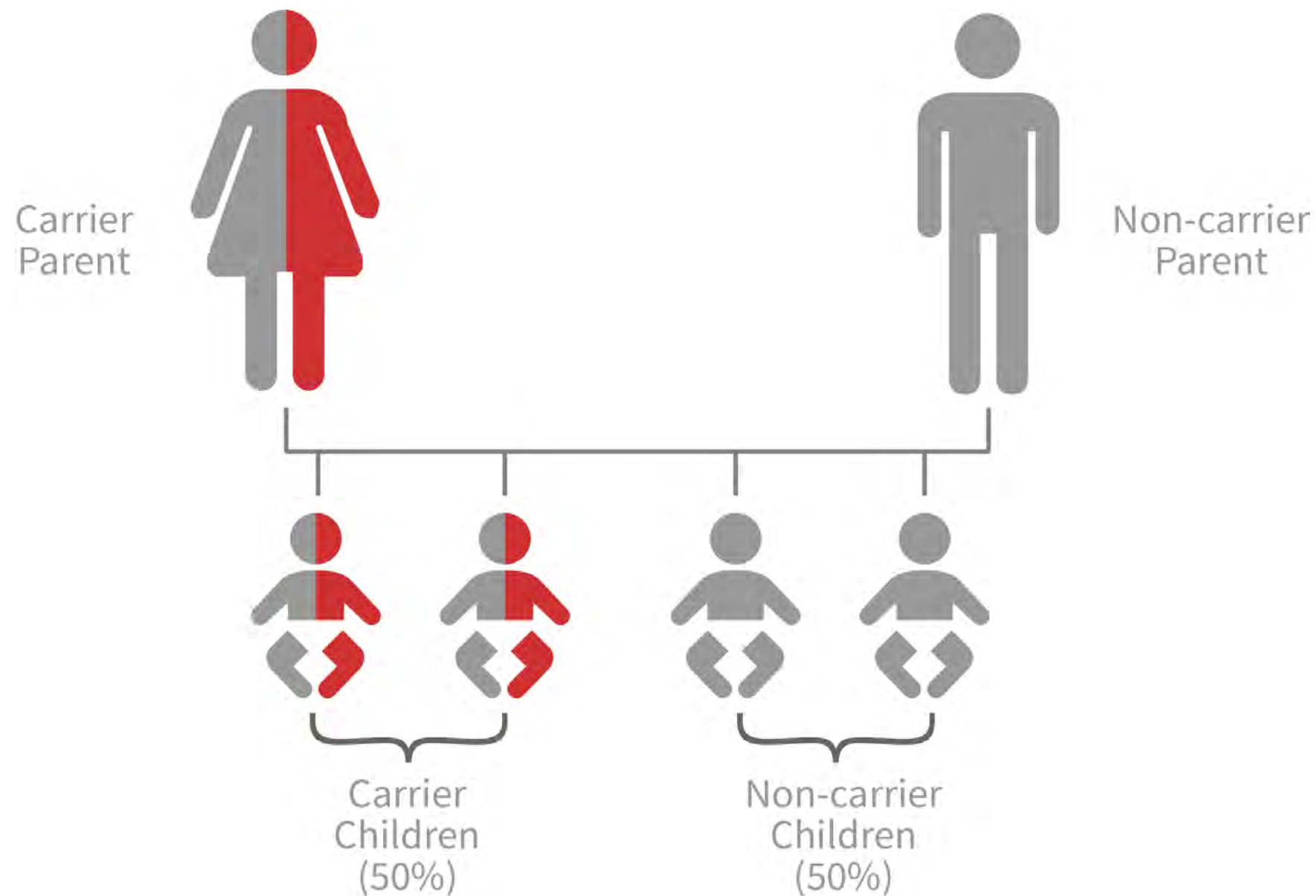




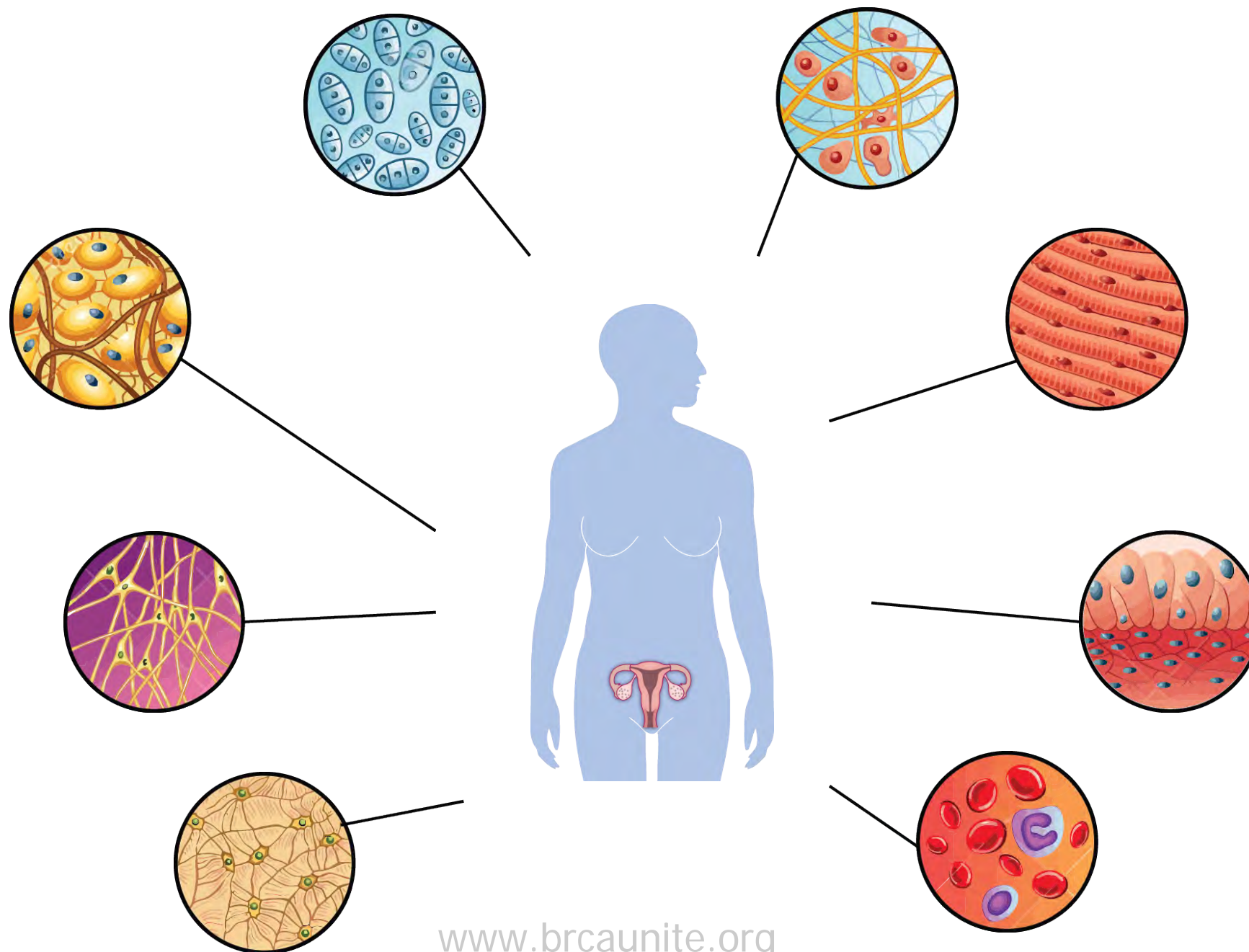
## BRCA1/2 Mutation – High-risk groups



## BRCA mutations are inherited in a dominant fashion



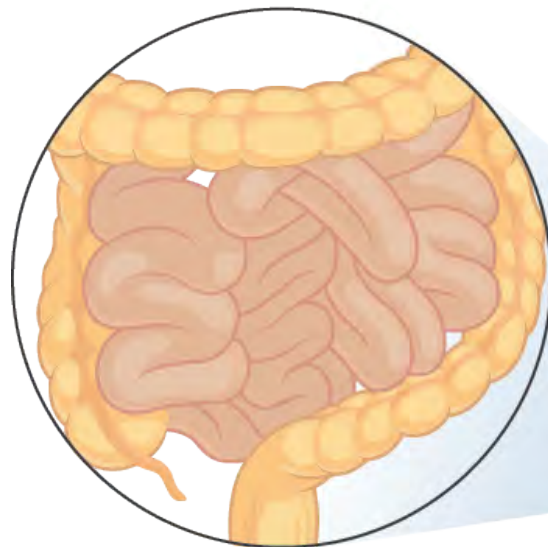
BRCA1/2 is present in all cells of the body



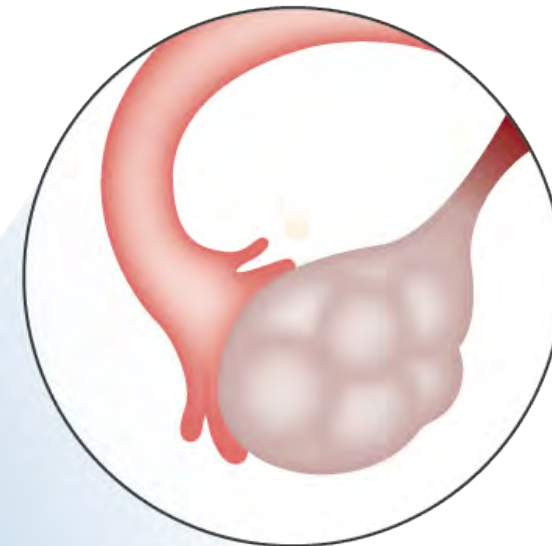


BRCA1/2 is present in all cells of the body

Example - Bowels:  
**High** number of cells  
**Fast** dividing cells



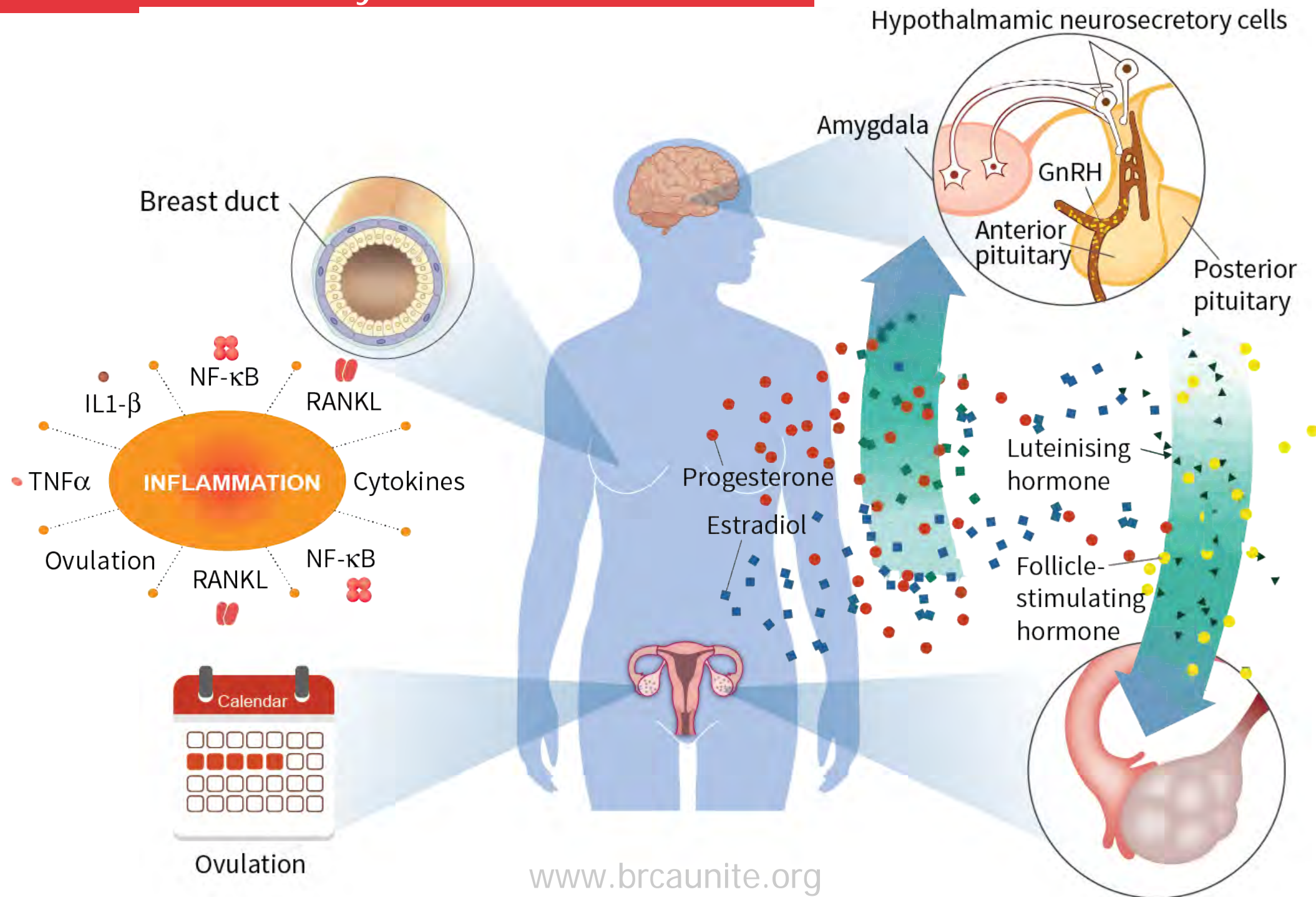
Example: Fallopian Tube Fimbriae:  
Very **low** number of cells  
**Slow** dividing cells



BRCA1/2 mutation carriers:  
**NO** increased risk

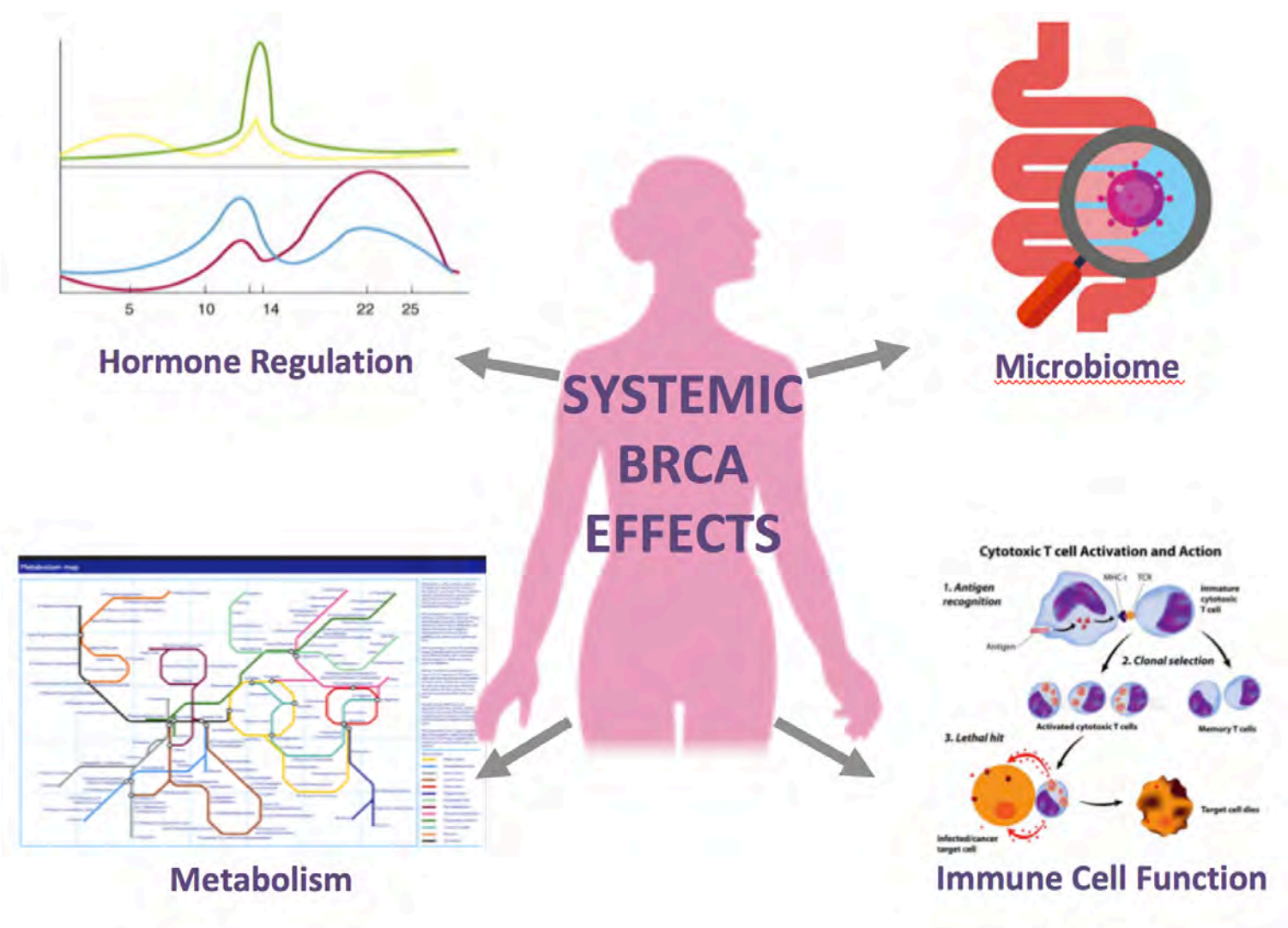
BRCA1/2 mutation carriers:  
**Extremely HIGH** risk

## BRCA carriers: Key role of other factors





## Taking a 'holistic' approach to patient centered care





## The team



## Inclusion criteria



Aged between 18 & 45 years



Off the oral contraceptive pill for 2 months minimum



Have had genetic testing and are confirmed BRCA1 positive or BRCA negative



Previous risk reducing surgery to remove both ovaries



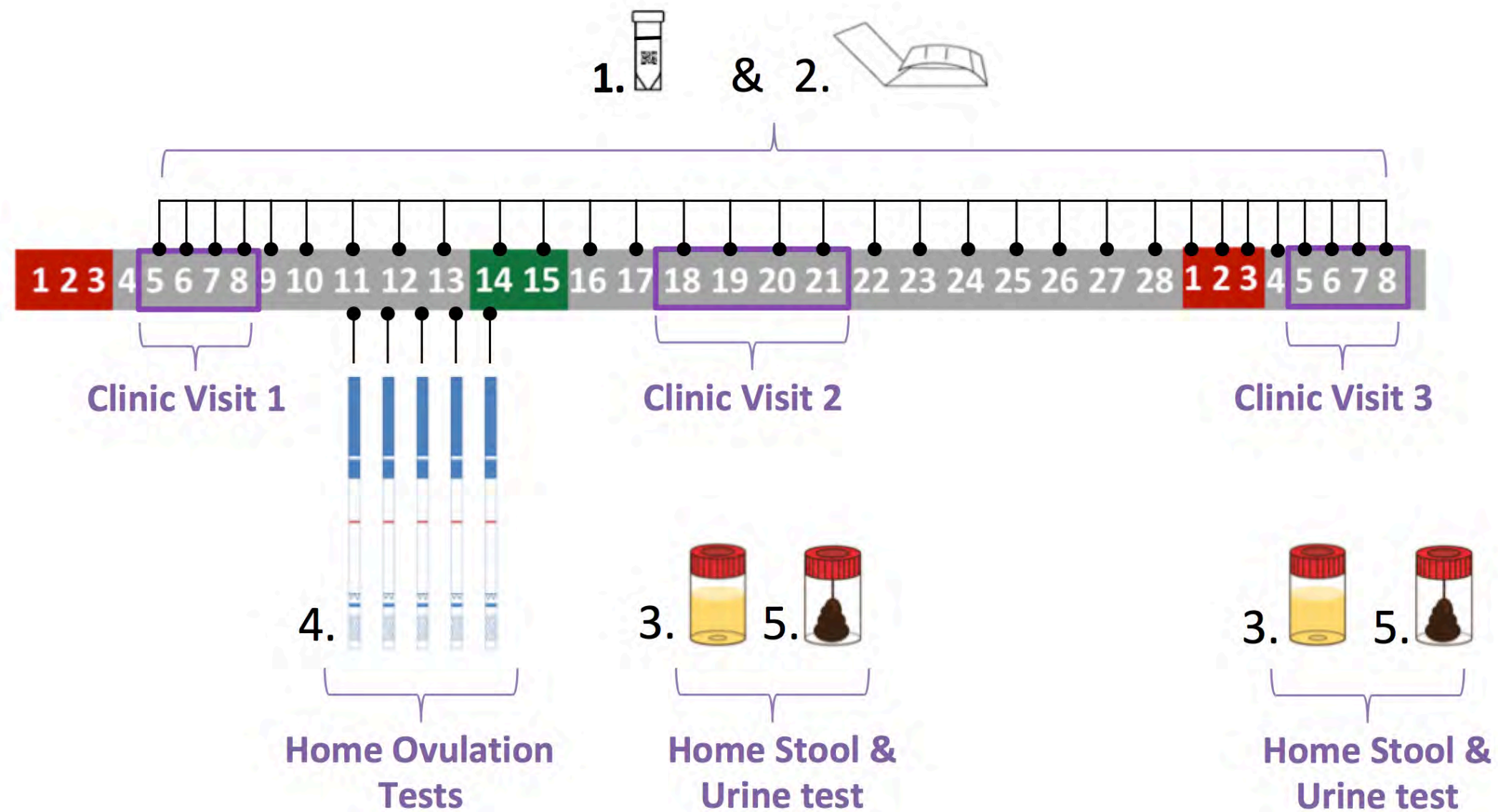
Not pregnant or breast feeding



You have not been diagnosed with or are receiving treatment for cancer



## What does it involve?







BRCA UNITE– A collaborative partnership



**Be a BRCA Champion!**

[www.brcaunite.org](http://www.brcaunite.org)

## BRCA UNITE– A collaborative partnership







**Uniting researchers and BRCA mutation carriers to advance  
our understanding of hereditary cancer**

**Thank you**