

Foundation  
Trust membership

Great Ormond Street  
Hospital for Children



NHS Foundation Trust

# Foundation Trust

Key facts about the  
Members' Council





## About Great Ormond Street Hospital for Children NHS Foundation Trust

In March 2012, Great Ormond Street Hospital gained Foundation Trust status. At the heart of the NHS foundation trust model is local accountability, in which our members and Members' Council play an essential role. For more information, please visit [www.gosh.nhs.uk/foundation](http://www.gosh.nhs.uk/foundation)

### What are the benefits of being a Foundation Trust member?

- more say for patients, their families, the public and staff
- more freedom over our finances
- more flexibility to meet local needs with partners

### Who are our members?

- patients who have been seen in the hospital within the last six years
- parents or carers of patients seen in the last six years
- members of the public
- our staff

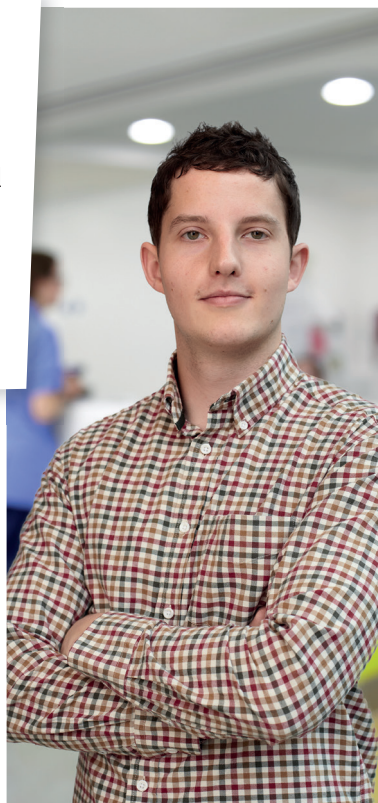
### Who are the Members' Council and what is their role?

Our Members' Council are elected by the members of the Trust and represent their views and interests by:

- Holding the Non-Executive Directors to account for the performance of the Board.
- Advising the Trust on strategy and priorities, to make sure that we are tackling the issues that are important to our patients and their families.
- Representing the interests of members and the public, and meeting and communicating with them about Trust developments.
- Helping promote membership and membership recruitment.
- Attending six Members' Council meetings a year (including the annual general meeting), preparing for meetings and joining Trust groups.

The council fulfils certain legal obligations by:

- Appointing and, if appropriate, removing the Chair.
- Appointing and, if appropriate, removing the other Non-Executive Directors.
- Deciding the remuneration and allowances and other terms and conditions of office of the Chair and the other Non-Executive Directors.
- Approving the new appointment of a Chief Executive.
- Appointing and, if appropriate, removing the Trust's auditor.
- Receiving the annual accounts and the annual report.



### How many positions are available in the forthcoming election?

There will be 22 seats up for election:

- Seven councillors will be elected by the Trust public membership.
- Ten councillors will be elected by the Trust patient and carer membership.
- Five councillors will be elected by the Trust staff membership.

A summary of the Members' Council by constituency can be found at [www.gosh.nhs.uk/composition](http://www.gosh.nhs.uk/composition)

### How long is the term of office?

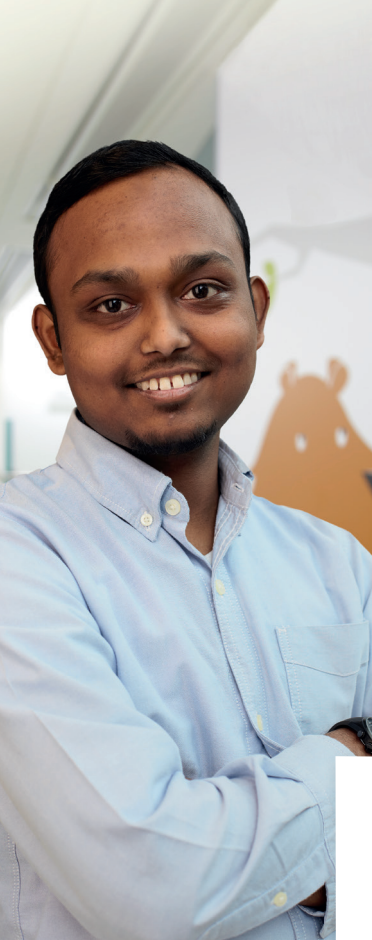
- The term of office for a councillor is three years and councillors are entitled to stand for re-election for one further term of three years (a maximum of six years).
- More can be found at [www.gosh.nhs.uk/ftselection](http://www.gosh.nhs.uk/ftselection)

### Who can stand for election?

Anybody can stand for election to the Members' Council, subject to the following eligibility criteria:

- They must be a member of Great Ormond Street Hospital for Children NHS Foundation Trust.
- They must be at least 16 years of age.
- If they are standing as a patient councillor, they must have been seen at the hospital within the last six years.
- If they are standing as a parent or carer councillor, they must have attended the Trust with the patient within the last six years.
- Public councillors must live in the constituency in which they wish to stand.
- A candidate for a staff councillor seat must be employed by the hospital on a permanent contract or fixed term contract for more than 12 months.





## Who is not eligible to stand for election?

There are some circumstances under which a member cannot stand for election to the Members' Council. You can read these by following the link to "Further provisions as to eligibility to be a councillor" here [www.gosh.nhs.uk/ftelection](http://www.gosh.nhs.uk/ftelection)

## Would you like to stand for election to the Members' Council?

If so, the timetable for elections is as follows:

- nominations open **Wednesday 19 November 2014**
- closing date for receipt of nominations **Wednesday 17 December 2014**
- voting packs dispatched to all Trust members **Tuesday 27 January 2015**
- closing date for election **Thursday 19 February 2015**
- declaration of results **Friday 20 Feb 2015**
- this year you can nominate online.

## Next steps

You can attend one of our Election Information Sessions to hear about what the role is like day-to-day, and the time commitment required. Please visit [www.gosh.nhs.uk/ftelection](http://www.gosh.nhs.uk/ftelection) to find out more. This year you can nominate online, more details are in your letter. For any other queries about the election please contact Deirdre Leyden, Membership and Governance Manager at [deirdre.leyden@gosh.nhs.uk](mailto:deirdre.leyden@gosh.nhs.uk) or call **020 7405 9200 ext. 5668**.



Front cover: George Howell, councillor representing patients outside London. Inside front cover: Mathew, Young People's Forum Member and Foundation Trust Member. Inside: some of our Member's Council. Above: Muhammad Miah, Appointed Councillor representing Great Ormond Street Hospital School. Left: Sophie Talib, councillor representing patients from London.