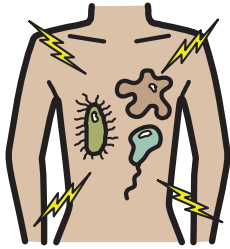


# Measuring outcomes and experience

Great Ormond Street  
Hospital for Children  
NHS Foundation Trust



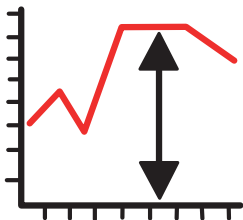
At GOSH, we want to offer the best care we can to our patients. We check how well we are doing and tell you on our website. There are lots of different ways we can check.



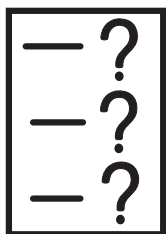
We might count how many people get an infection during treatment.



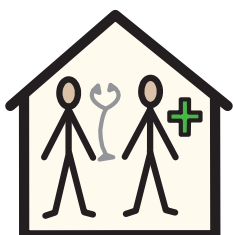
We might look at how many patients need to suddenly come back for more treatment after they have gone home.



We might measure how well you can do something before treatment. We then compare that with how you can do it after treatment.



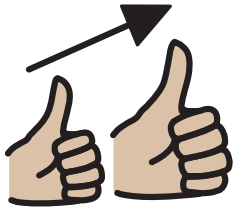
We might ask you some questions about how you cope with everyday things, like school and making friends.



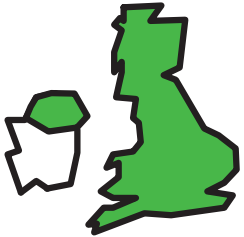
We might ask you to tell us about your stay in hospital.

# Measuring outcomes and experience

Great Ormond Street  
Hospital for Children  
NHS Foundation Trust



We use all this information to help us improve how we treat our patients.



We can also use this information to check how GOSH is doing compared to other hospitals in Britain.



As we are a specialist hospital, we also compare GOSH with hospitals like ours all over the world.



Help us to improve how we treat our patients!



If you have any questions, please ask us.