
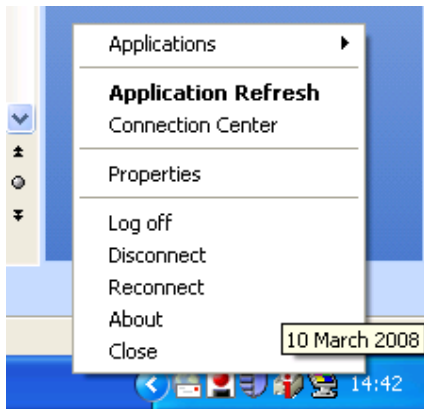


## LOGGING INTO TOMCAT FROM YOUR CAREVUE MONITOR

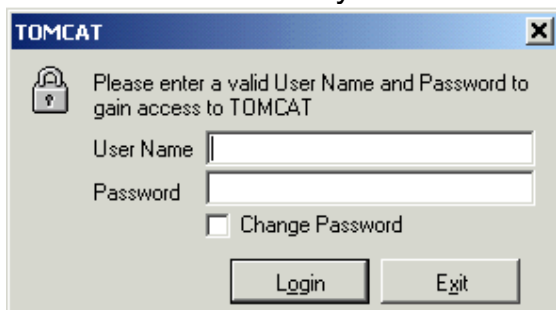
1. Minimise carevue by clicking sign in top right hand corner
2. Go to citrix icon in bottom right hand corner – red ball 
3. Right click to open menu



4. Click on applications to open up menu with PIMS and TOMCAT then click on TOMCAT LIVE



5. Purple Tomcat logo box will appear then a log in box for you to access the system

A screenshot of the TOMCAT login window. The window has a title bar that says 'TOMCAT'. Inside, there is a lock icon and the text 'Please enter a valid User Name and Password to gain access to TOMCAT'. Below this, there are two input fields: 'User Name' and 'Password'. There is also a checkbox labeled 'Change Password'. At the bottom, there are two buttons: 'Login' and 'Exit'.

Your user name will be your novell user name ie. First 5 letters of surname followed by initial followed by a number in some cases

Password will be confidential to you and is set by yourself after the initial password of your first name is put in and which will prompt a password change.

You are now logged into TOMCAT to access the Inpatient View