

# HELP US

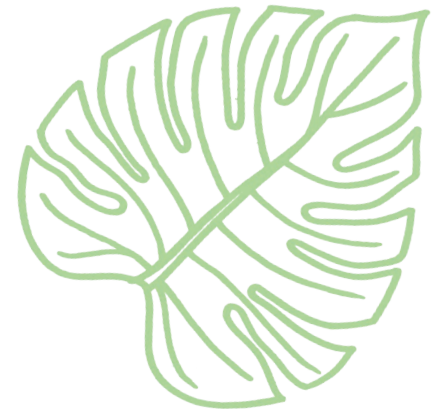


## OUR GARDEN

Can you help us create an artwork for our exciting new garden?

We are creating a garden for the Chelsea Flower Show that will then be transported to the roof of GOSH for everyone to enjoy.

As part of the garden we'd like to include an artwork made up of images of leaves. We want as many children and young people at GOSH as possible to make an image of a leaf for this. Can you create a leaf for us?



Great Ormond Street  
Hospital for Children  
NHS Foundation Trust



## THE MORGAN STANLEY GARDEN FOR GREAT ORMOND STREET HOSPITAL

The garden, sponsored by Morgan Stanley and designed by Chris Beardshaw, will feature patient artwork on the ceiling of the roofed areas marked by a red dot on the design drawing below.



Workshops will be held across the hospital in outpatient areas and on wards. Drop into the Activity Centre throughout half term if you would like to join in, or use this worksheet to help you create a leaf and send your artwork to us by 29 February. We hope to include as many designs as possible.

## LEAVES

Leaves come in all kinds of shapes and sizes...



Oak



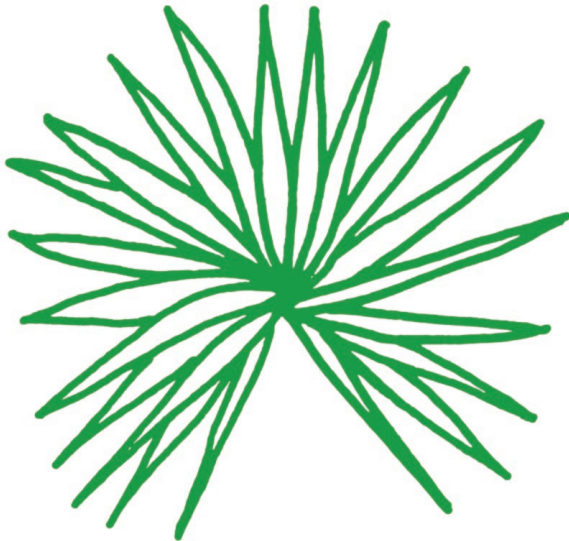
Holly



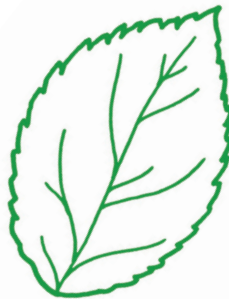
Dandelion



Banana



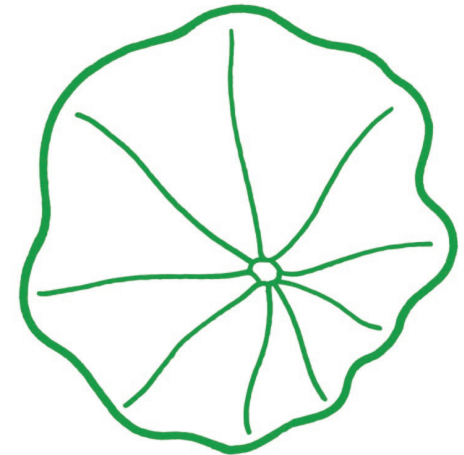
Petticoat Palm



Apple



Sycamore



Nasturtium

... these are just a few examples, there are many, many more.  
See, if you can find some more kinds next time you walk past a garden.



## CREATING YOUR LEAF DESIGN

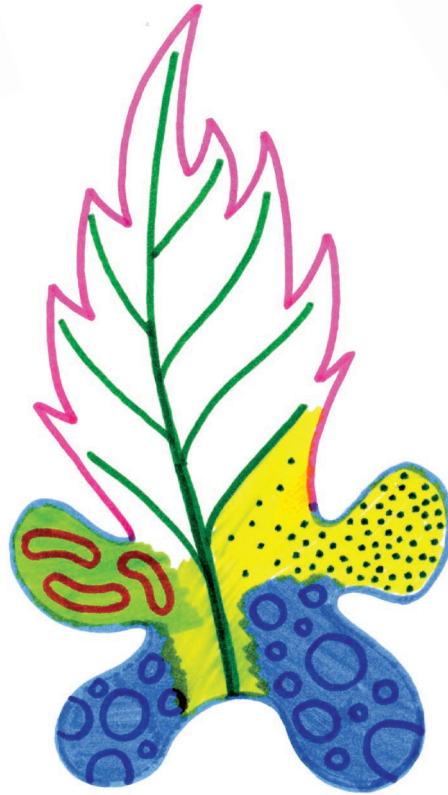
You can create you leaf design in lots of different ways. You could draw it, paint it, collage it, stencil it...



Your leaf could be drawn using colour pencils...



... or felt pens... or both!



You're welcome to come up with your own unique leaf shape and design, let your imagination run wild!

## PAINTING A LEAF DESIGN



You could create a design using watercolour paint. For best results use watercolour paper (220 - 300 gsm) which is thicker and more absorbant than standard paper. You can paint colour straight onto the paper as above or...



... you can cover the leaf design with water first and drop colours onto the still wet paper and watch the colours spread and mix in an exciting way.

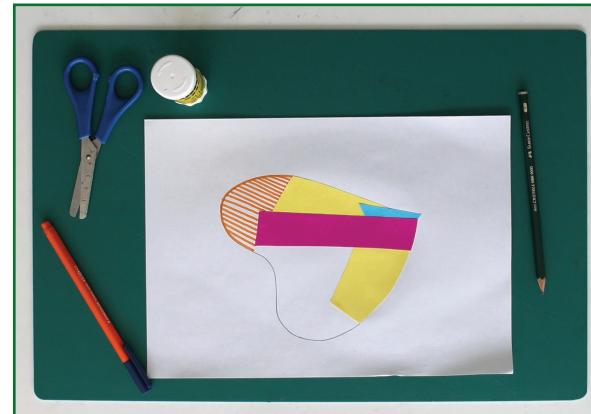


You can create a leaf using other paints such as poster paint or gouache for example. You could use lots of colours and paint different shapes and patterns onto your design.

## COLLAGING A LEAF DESIGN



Using colour paper you can create an exciting collage leaf design. One way to do it is to stick lots of pieces of coloured paper down onto a blank sheet and then cut a leaf shape out using scissors or...



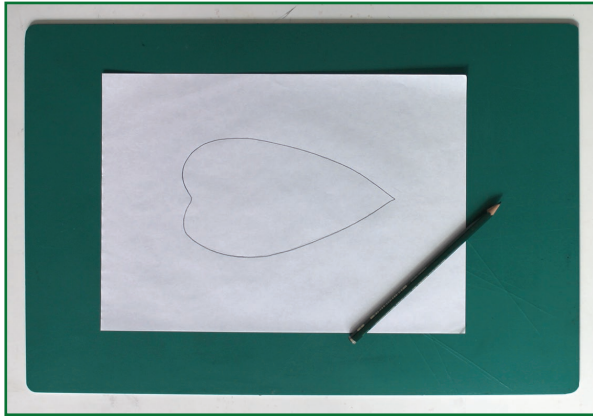
... you could draw a leaf shape onto a blank sheet and cut and stick colour paper into the shape. You can also draw details and patterns onto your collage as shown above.



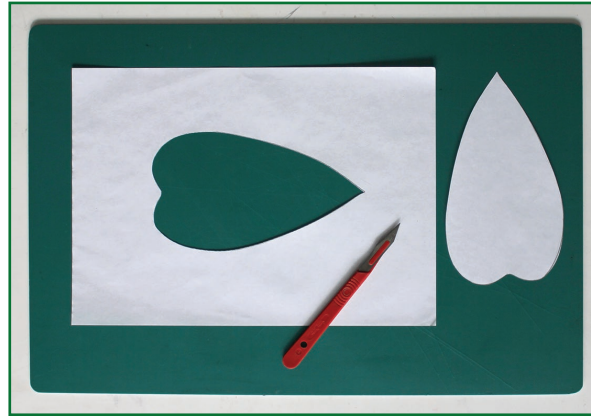
## CREATING A STENCILLED LEAF DESIGN

Stencilling is a fun way of creating a neat and striking painted design.

If you would like to create a leaf picture this way carefully read the instruction below to find out how to do it and what equipment you will need.



1. Draw a simple leaf shape on a thin piece of paper. Layout paper is good for this or you could use basic copy/printer paper.



2. Ask a grown up to help you cut the leaf shape out using a craft knife. Make sure to use a cutting mat or something similar underneath.



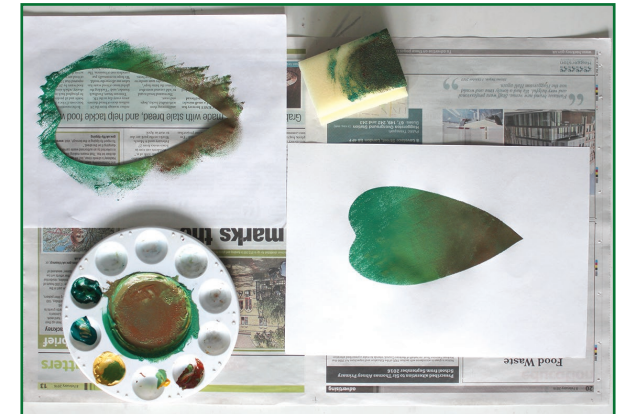
3. Use a piece of cartridge/drawing paper to stencil onto. Attach the stencil shape to the top gently using tape, masking tape is best for doing this.



4. Before painting make sure to cover your work area with newspaper to avoid any mess. You can use poster paint, water soluble printing ink or acrylic. To apply the paint you can use a basic kitchen sponge or similar. (Please note that acrylic paint does not wash off clothing when dry and should be washed off equipment straight after use.)



5. Make sure the paint you mix on the palette is thick with only a little water added. If it is too runny it will seep under the stencil paper. Try to avoid getting blobs of paint on the sponge, press the sponge down firmly on the palette so the paint is evenly distributed. Apply the paint to the stencil in straight up and down movements.



6. You can mix different colours as you apply the paint if you wish to create a multi-coloured design. Should you need to wash the sponge whilst doing this make sure you dry it so that it is only damp to the touch. Once finished, carefully remove the stencil paper straight away and leave your design to dry. (Once dry you can paint extra details or patterns on your design with a brush should you wish too.)

If you are happy for your leaf to go in the garden please leave it with us in a workshop or send it in. By leaving or sending it we will assume you are giving us permission to use it in the garden and any associated publicity.

If you would like your leaf back afterwards please give us your address and we will post it back after it has been scanned.

If you don't want your leaf to be used that 's no problem – please take part in the workshops anyway.

### WHAT DO I DO WITH MY LEAF WHEN I HAVE FINISHED?

PLEASE SEND IT TO:

GO Create!  
Redevelopment  
Barclay House, Level 4,  
Great Ormond Street London  
WC1N 3JH

Make sure you send your leaf to us by 29th February

If you can't post your leaf you can scan or photograph it  
(but please do this at the highest resolution possible)  
and email it to [gocreate@gosh.nhs.uk](mailto:gocreate@gosh.nhs.uk)

(Note to staff – if handed in please return to GO Create! at above address)

We will try to include as many designs as possible.  
When the garden is open, come and see if you can spot your leaf!

GO Create is the GOSH Arts Programme.  
For further info see [www.gosh.nhs.uk](http://www.gosh.nhs.uk) or follow us at [@gocreateGOSH](https://twitter.com/gocreateGOSH)



Great Ormond Street  
Hospital for Children  
NHS Foundation Trust



**YOU CAN USE THIS PAGE FOR CREATING A DRAWING OR COLLAGE OF A LEAF**